



# CLOSURE & DETOUR NOTICE

## West County Connectors Construction Nighttime Closures for the Week of July 10

**WHAT:** During the week of July 10 closures will occur to allow for pile driving activities, setting k-rail, traffic striping, temporary paving and vegetation removal.

**WHEN:** Closures will occur Sunday, July 10 through Saturday, July 16, with specific times listed below.

**DISCLAIMER:** Due to unforeseen operational factors or inclement weather, these dates and times may change.

### EAST SEGMENT CLOSURES

CLOSURES	Sunday 7/10/11	Monday 7/11/11	Tuesday 7/12/11	Wednesday 7/13/11	Thursday 7/14/11	Friday 7/15/11	Saturday 7/16/11
<b>1</b>							
<b>NB I-405 Lane Closure</b> from Westminster Avenue to Seal Beach Boulevard  • Lanes closed from 10 p.m. to 5 a.m.	✓	✓	✓	✓	✓		
<b>DETOUR 1:</b> • At least one lane will remain open at all times on the NB I- 405 from Westminster Avenue to Seal Beach Boulevard							
<b>2</b>							
<b>SB I-405 Lane Closure</b> from Seal Beach Boulevard to Westminster Avenue  • Lanes closed from 10 p.m. to 5 a.m.	✓	✓	✓	✓	✓		
<b>DETOUR 2:</b> • At least one lane will remain open at all times on the SB I- 405 from Seal Beach Boulevard to Westminster Avenue							
<b>3</b>							
<b>WB SR-22 Lane Closure</b> from Knott Street / Goldenwest Street to the Valley View Street off-ramp  • Lanes closed from 10 p.m. to 5 a.m.	✓	✓	✓	✓	✓	✓	✓
<b>DETOUR 3:</b> • At least one lane will remain open at all times on the WB SR-22 from Knott Street / Goldenwest Street to the Valley View Street off-ramp							



# CLOSURE & DETOUR NOTICE

CLOSURES	Sunday 7/10/11	Monday 7/11/11	Tuesday 7/12/11	Wednesday 7/13/11	Thursday 7/14/11	Friday 7/15/11	Saturday 7/16/11
<b>4</b>							
<b>EB SR-22 Lane Closure</b> from the Valley View Street off-ramp to Knott Street / Goldenwest Street  <ul style="list-style-type: none"> <li>Lanes closed from 10 p.m. to 5 a.m.</li> </ul>	✓	✓	✓	✓	✓	✓	✓
<b>DETOUR 4:</b> <ul style="list-style-type: none"> <li>At least one lane will remain open at all times on the EB SR-22 from the Valley View Street off-ramp to Knott Street / Goldenwest Street</li> </ul>							
<b>5</b>							
<b>SB I-405 to EB SR-22 Connector</b>  <ul style="list-style-type: none"> <li>Full closure from midnight to 5 a.m.</li> </ul>	✓	✓	✓	✓	✓	✓	✓
<b>DETOUR 5:</b> <ul style="list-style-type: none"> <li>Exit Seal Beach Boulevard from SB I-405, left on Seal Beach Boulevard, left on Westminster Avenue, left on Goldenwest Street, proceed north on Goldenwest Street to access the EB SR-22 on-ramp</li> </ul>							
<b>6</b>							
<b>WB SR-22 to NB I-405 Connector</b>  <ul style="list-style-type: none"> <li>Full closure from midnight to 5 a.m.</li> </ul>	✓	✓	✓	✓	✓	✓	✓
<b>DETOUR 6:</b> <ul style="list-style-type: none"> <li>Exit Goldenwest Street / Knott Avenue from the WB SR-22, left on Garden Grove Boulevard, left on Goldenwest Street, right on Westminster Avenue to access the NB I-405 on-ramp</li> </ul>							
<b>7</b>							
<b>SB I-405 Bolsa Chica Road off-ramp</b>  <ul style="list-style-type: none"> <li>Closed from 10 p.m. to 5 a.m.</li> </ul>	✓	✓	✓	✓	✓	✓	✓
<b>DETOUR 7:</b> <ul style="list-style-type: none"> <li>Exit Seal Beach Boulevard from the SB I-405, left on Seal Beach Boulevard, left on Westminster Avenue, proceed east to Bolsa Chica Road</li> </ul>							



# CLOSURE & DETOUR NOTICE

CLOSURES	Sunday 7/10/11	Monday 7/11/11	Tuesday 7/12/11	Wednesday 7/13/11	Thursday 7/14/11	Friday 7/15/11	Saturday 7/16/11
<b>8</b>							
<b>SB I-405 Bolsa Chica Road on-ramp</b> <ul style="list-style-type: none"> <li>Closed from 10 p.m. to 5 a.m.</li> </ul>	✓	✓	✓	✓	✓	✓	✓
<b>DETOUR 8:</b> <ul style="list-style-type: none"> <li>From Bolsa Chica Road, proceed south to Westminster Avenue and turn left, proceed east on Westminster Avenue to access the SB I-405 on-ramp</li> </ul>							
<b>9</b>							
<b>WB SR-22 Valley View Street loop and straight on-ramps</b> <ul style="list-style-type: none"> <li>Closed from 11 p.m. to 5 a.m.</li> </ul>	✓	✓	✓	✓	✓	✓	✓
<b>DETOUR 9:</b> <ul style="list-style-type: none"> <li>From Valley View Street / Bolsa Chica Road, proceed south to Westminster Avenue and turn left, continue east on Westminster Avenue, to access the NB I-405 / WB SR-22</li> </ul>							
<b>10</b>							
<b>WB SR-22 Valley View Street off-ramp</b> <ul style="list-style-type: none"> <li>Closed from 10 p.m. to 5 a.m.</li> </ul>	✓	✓	✓	✓	✓	✓	✓
<b>DETOUR 10:</b> <ul style="list-style-type: none"> <li>From the SB I-405 exit Seal Beach Boulevard, left on Seal Beach Boulevard, left on Westminster Avenue, left on Springdale Street, proceed north on Springdale Street to Garden Grove Boulevard</li> </ul>							
<b>11</b>							
<b>EB SR-22 Valley View Street off-ramp</b> <ul style="list-style-type: none"> <li>Closed from 10 p.m. to 5 a.m.</li> </ul>	✓	✓	✓	✓	✓	✓	✓
<b>DETOUR 11:</b> <ul style="list-style-type: none"> <li>From the SB I-405 exit Seal Beach Boulevard, left on Seal Beach Boulevard, left on Westminster Avenue, left on Springdale Street, proceed north on Springdale Street to Garden Grove Boulevard</li> </ul>							



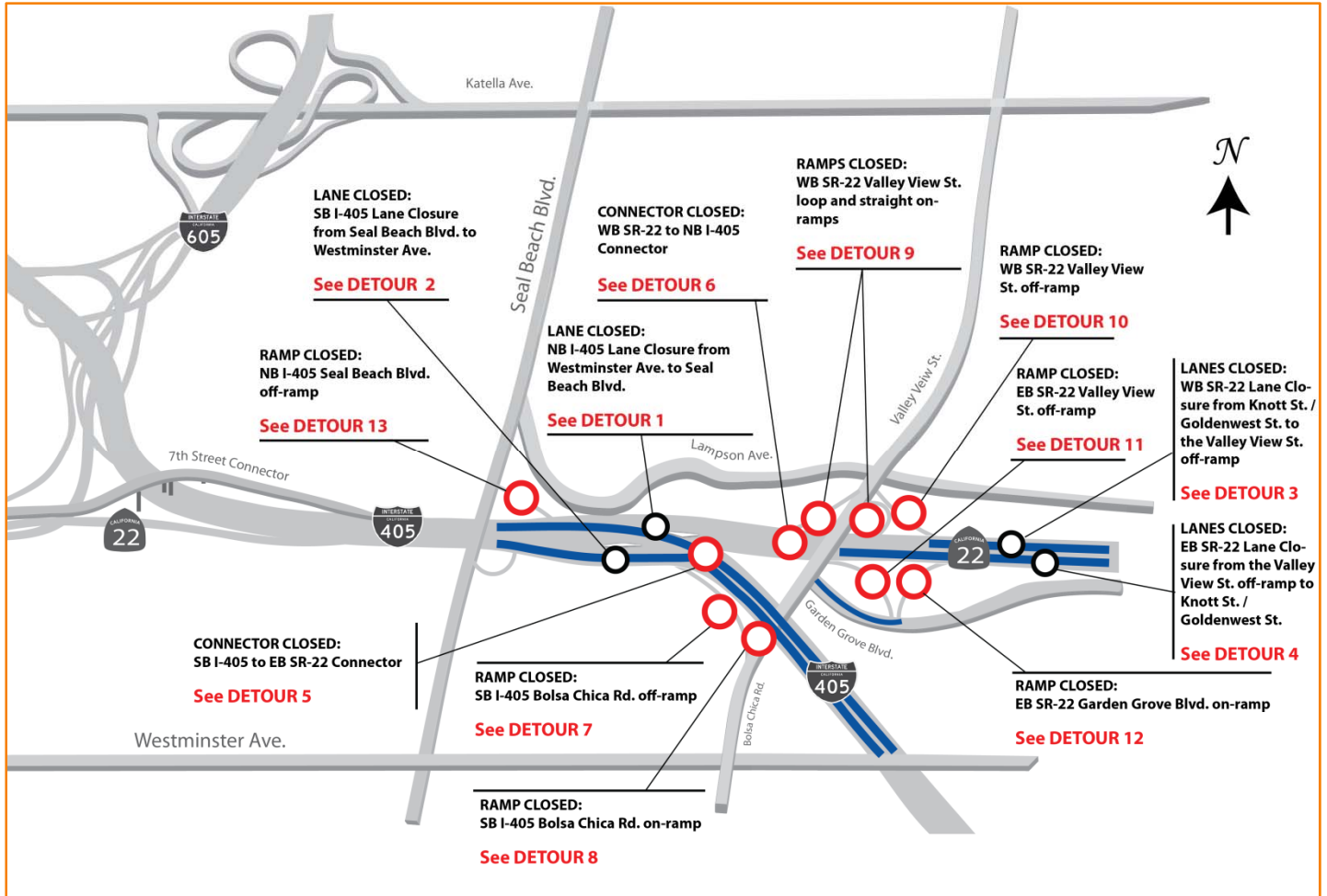
# CLOSURE & DETOUR NOTICE

CLOSURES	Sunday 7/10/11	Monday 7/11/11	Tuesday 7/12/11	Wednesday 7/13/11	Thursday 7/14/11	Friday 7/15/11	Saturday 7/16/11
<b>12</b>							
<b>EB SR-22 Garden Grove Boulevard on-ramp</b> <ul style="list-style-type: none"> <li>Closed from 10 p.m. to 5 a.m.</li> </ul>	✓	✓	✓	✓	✓	✓	✓
<b>DETOUR 12:</b> <ul style="list-style-type: none"> <li>From Garden Grove Boulevard proceed east to Goldenwest Street to access the EB SR-22 on-ramp</li> </ul>							
<b>13</b>							
<b>NB I-405 Seal Beach Boulevard off-ramp</b> <ul style="list-style-type: none"> <li>Closed from 10 p.m. to 5 a.m.</li> </ul>	✓	✓	✓	✓	✓		
<b>DETOUR 13:</b> <ul style="list-style-type: none"> <li>From the NB I-405, exit Westminster Avenue, left on Westminster Avenue, proceed west to Seal Beach Boulevard</li> </ul>							



# CLOSURE & DETOUR NOTICE

## EAST SEGMENT MAP





# CLOSURE & DETOUR NOTICE

## WEST SEGMENT CLOSURES

CLOSURES	Sunday 7/10/11	Monday 7/11/11	Tuesday 7/12/11	Wednesday 7/13/11	Thursday 7/14/11	Friday 7/15/11	Saturday 7/16/11
<b>1</b>							
<b>NB I-405 / WB SR-22 / 7<sup>th</sup> Street Connector Closure</b> <ul style="list-style-type: none"> <li>Connector closed until April 2012</li> </ul>	<b>CLOSED UNTIL APRIL 2012</b>						
<b>DETOUR 1:</b> <ul style="list-style-type: none"> <li>From the northbound I-405, exit Westminster Avenue and proceed west. Turn right on Studebaker Road and proceed north to 7th Street and SR-22</li> </ul> <b>OR</b> <ul style="list-style-type: none"> <li>From the northbound I-405, exit Palo Verde Avenue. Turn left on Palo Verde Avenue and proceed south to Stearns Street. Turn left on Stearns Street and proceed to the southbound I-405 on-ramp. Take the southbound I-405 to the westbound SR-22 connector and 7th Street</li> </ul> <b>OR</b> <ul style="list-style-type: none"> <li>From the northbound I-405, exit Palo Verde Avenue. Turn right on Palo Verde Avenue and proceed north to Willow Street. Turn right on Willow Street and proceed east to Studebaker Road. Turn right on Studebaker Road and proceed south to 7th Street and the SR-22</li> </ul>							
<b>2</b>							
<b>NB I-405 Lane Closure</b> from Seal Beach Boulevard to the NB I-605 <ul style="list-style-type: none"> <li>Lanes closed from 10 p.m. to 5 a.m.</li> </ul>	✓	✓	✓	✓	✓	✓	✓
<b>DETOUR 2:</b> <ul style="list-style-type: none"> <li>At least one lane will be open at all times on the NB I-405 from Seal Beach Boulevard to the NB I-605 freeway</li> </ul>							
<b>3</b>							
<b>SB I-405 Lane Closure</b> from the SB I-605 to Seal Beach Boulevard <ul style="list-style-type: none"> <li>Lanes closed from 10 p.m. to 5 a.m.</li> </ul>	✓	✓	✓	✓	✓	✓	✓
<b>DETOUR 3:</b> <ul style="list-style-type: none"> <li>At least one lane will be open at all times on the SB I-405 from the SB I-605 freeway to Seal Beach Boulevard</li> </ul>							



# CLOSURE & DETOUR NOTICE

CLOSURES	Sunday 7/10/11	Monday 7/11/11	Tuesday 7/12/11	Wednesday 7/13/11	Thursday 7/14/11	Friday 7/15/11	Saturday 7/16/11
<b>4</b>							
<b>NB I-605 Lane Closure</b> from the NB I-405 to Katella Avenue <ul style="list-style-type: none"> <li>Lanes closed from 10 p.m. to 5 a.m.</li> </ul>	✓	✓	✓	✓	✓	✓	✓
<b>DETOUR 4:</b> <ul style="list-style-type: none"> <li>At least one lane will be open at all times on the NB I-605 from the NB I-405 freeway to Katella Avenue</li> </ul>							
<b>5</b>							
<b>SB I-605 Lane Closure</b> from Katella Avenue to the SB I-405 <ul style="list-style-type: none"> <li>Lanes closed from 10 p.m. to 5 a.m.</li> </ul>	✓	✓	✓	✓	✓	✓	✓
<b>DETOUR 5:</b> <ul style="list-style-type: none"> <li>At least one lane will be open at all times on the SB I-605 from Katella Avenue to the SB I-405 freeway</li> </ul>							
<b>6</b>							
<b>NB I-405 to NB I-605 Connector</b> <ul style="list-style-type: none"> <li>Full closure from 10 p.m. to 5 a.m.</li> </ul>	✓	✓	✓	✓	✓	✓	✓
<b>DETOUR 6:</b> <ul style="list-style-type: none"> <li>From the NB I-405, exit Westminster Avenue, proceed west on Westminster Avenue and turn right on Seal Beach Boulevard, continue north (Seal Beach Boulevard becomes Los Alamitos Boulevard) and turn left on Katella Avenue to access the NB I-605 on-ramp</li> </ul> <b>OR</b> <ul style="list-style-type: none"> <li>From the NB I-405, exit Palo Verde Avenue, turn right on Palo Verde Avenue and proceed north, turn right on Willow Street and proceed east to access the NB I-605 on-ramp</li> </ul>							
<b>7</b>							
<b>EB SR-22 to SB I-405 Connector</b> <ul style="list-style-type: none"> <li>Full closure from 10 p.m. to 5 a.m.</li> </ul>	✓	✓	✓	✓	✓	✓	✓
<b>DETOUR 7:</b> <ul style="list-style-type: none"> <li>Eastbound SR-22 Street traffic will travel south on Studebaker Road, proceed south and turn left on East 2<sup>nd</sup> Street / Westminster Avenue, turn left on Westminster Avenue, proceed east on Westminster Avenue to access the SB I-405 on-ramp</li> </ul>							



# CLOSURE & DETOUR NOTICE

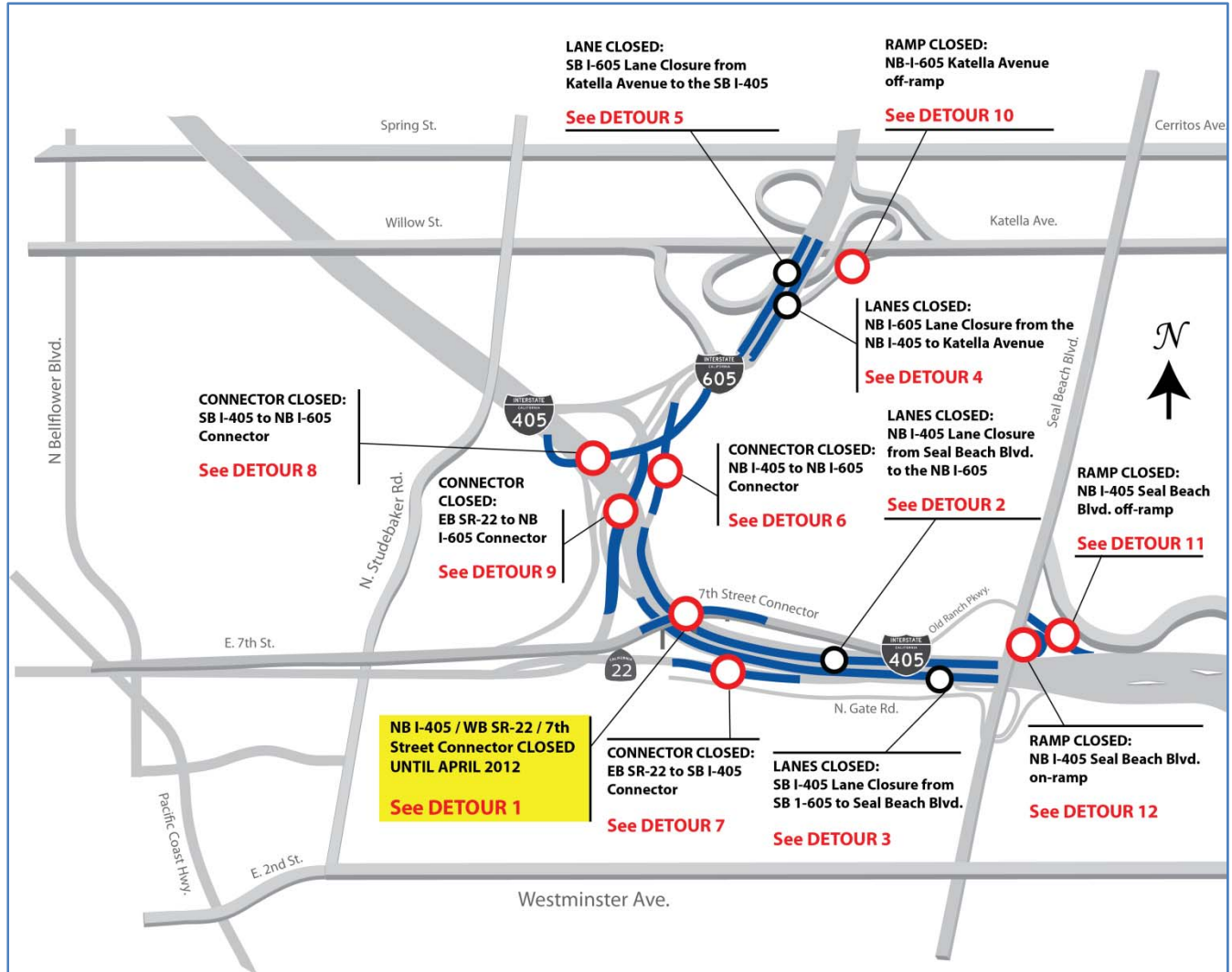
CLOSURES	Sunday 7/10/11	Monday 7/11/11	Tuesday 7/12/11	Wednesday 7/13/11	Thursday 7/14/11	Friday 7/15/11	Saturday 7/16/11
<b>8</b>							
<b>SB I-405 to NB I-605 Connector</b>							
<ul style="list-style-type: none"> <li>Full closure from 10 p.m. to 5 a.m.</li> </ul>	✓	✓	✓	✓	✓	✓	✓
<b>DETOUR 8:</b> <ul style="list-style-type: none"> <li>From the SB I-405, exit Palo Verde Avenue and turn left, proceed north on Palo Verde Avenue to East Willow Street, turn right on East Willow Street and proceed east to access the NB I-605 on-ramp</li> </ul>							
<b>9</b>							
<b>EB SR-22 to NB I-605 Connectors</b>							
<ul style="list-style-type: none"> <li>Full closure from 11 p.m. to 5 a.m.</li> </ul>	✓	✓	✓	✓	✓	✓	✓
<b>DETOUR 9:</b> <ul style="list-style-type: none"> <li>From the EB SR-22, exit Studebaker Road and turn right, proceed north on Studebaker Road to East Willow Street, turn right on East Willow Street and proceed east to access the NB I-605 on-ramp</li> </ul>							
<b>10</b>							
<b>NB I-605 Katella Avenue off-ramp</b>							
<ul style="list-style-type: none"> <li>Full closure from 10 p.m. to 5 a.m.</li> </ul>	✓	✓					
<b>DETOUR 10:</b> <ul style="list-style-type: none"> <li>From the NB I-405, exit Seal Beach Boulevard and turn right, proceed north on Seal Beach Boulevard / Los Alamitos Boulevard and continue to Katella Avenue</li> </ul> <b>OR</b> <ul style="list-style-type: none"> <li>From the NB I-605, exit Willow Street</li> </ul>							
<b>11</b>							
<b>NB I-405 Seal Beach Boulevard off-ramp</b>							
<ul style="list-style-type: none"> <li>Full closure from 10 p.m. to 5 a.m.</li> </ul>			✓	✓	✓	✓	
<b>DETOUR 11:</b> <ul style="list-style-type: none"> <li>From the NB I-405, exit Westminster Avenue, left on Westminster Avenue, proceed west to Seal Beach Boulevard</li> </ul>							
<b>12</b>							
<b>NB I-405 Seal Beach Boulevard on-ramp</b>							
<ul style="list-style-type: none"> <li>Full closure from 10 p.m. to 5 a.m.</li> </ul>			✓	✓	✓	✓	
<b>DETOUR 12:</b> <ul style="list-style-type: none"> <li>From Seal Beach Boulevard proceed south to Westminster Avenue and turn right, turn right on Studebaker Road and continue north to access the NB I-405 on-ramp</li> </ul>							





# CLOSURE & DETOUR NOTICE

## WEST SEGMENT MAP





# CLOSURE & DETOUR NOTICE

**FOR MORE INFORMATION  
OR TO BE ADDED TO THE  
PROJECT DISTRIBUTION  
LIST:**



Contact Christina Byrne,  
Community Liaison, at  
(714) 560-5717 or  
[cbyrne@octa.net](mailto:cbyrne@octa.net)



[www.facebook.com/  
WCCProjectInfo](http://www.facebook.com/WCCProjectInfo)



@wccprojectinfo



[www.octa.net/westcounty](http://www.octa.net/westcounty)



Construction Helpline  
(800) 724-0353

## Orange County Transportation Authority

550 S. Main St.

P.O. Box 14184

Orange, CA 92863-1584

*OCTA and Caltrans remind motorists to please drive with extra caution and reduce speeds while traveling through freeway work zones. Individuals with sensory disabilities can obtain this document in an alternate format by contacting the Construction Helpline at (800) 724-0353 through the California Relay System (800) 735-2922. For any other inquiries regarding the project, please call the Construction Helpline at (800) 724-0353. Every effort will be made to minimize impacts to residents, businesses and motorists throughout this and all phases of construction.*

