



CLOSURE & DETOUR NOTICE

* UPDATED * Nighttime Closures Week of March 18

WHAT: Closures are scheduled nightly this week through Saturday, March 24, to allow for the following activities: minor demolition activities, falsework installation and reconstruction of the western half of the Valley View Street bridge, roadway paving, striping and continue falsework construction at the 7th Street bridge.

EAST SEGMENT HIGHLIGHTS:

UPDATE: The **southbound I-405 freeway** will be closed from Seal Beach Boulevard to Bolsa Chica Road between 11 p.m. and 5 a.m. Friday night, March 23 and Saturday night, March 24.

*See Closure #2 (EAST)

The **westbound SR-22 / northbound I-405 connector** and the **southbound I-405 / eastbound SR-22 connector** will be closed nightly between midnight and 5 a.m. *See Closures # 4 & 5 (EAST)

WEST SEGMENT HIGHLIGHTS:

The **southbound I-405 freeway** will be closed from the I-605 freeway to Seal Beach Boulevard between 11 p.m. and 5 a.m. Friday night, March 23 and Saturday night, March 24. *See Closure #3 (WEST)

WHEN: Nighttime closures are scheduled Sunday night, March 18 through Saturday night, March 24, with specific times listed below.

DISCLAIMER: Due to unforeseen operational factors or inclement weather, these dates and times are subject to change.

EAST SEGMENT NIGHTTIME CLOSURES

CLOSURES	Sunday 3/18/12	Monday 3/19/12	Tuesday 3/20/12	Wednesday 3/21/12	Thursday 3/22/12	Friday 3/23/12	Saturday 3/24/12
1							
Garden Grove Boulevard Full Closure from Valley View Street to the NB I-405 Valley View Street off-ramp <ul style="list-style-type: none"> All lanes closed from 10 p.m. to 5 a.m. 				✓	✓	✓	✓
DETOUR 1 <ul style="list-style-type: none"> From Bolsa Chica Road, proceed south and turn left on Westminster Avenue, left on Goldenwest Street, proceed north on Goldenwest Street to access the EB SR-22 on-ramp OR <ul style="list-style-type: none"> From Valley View Street, proceed north and turn right on Lampson Avenue, turn right on Knott Street, proceed south on Knott Street to access the EB SR-22 on-ramp 							
2							
SOUTHBOUND I-405 FULL CLOSURE All southbound lanes of the I-405 from Seal Beach Boulevard to Bolsa Chica Road <ul style="list-style-type: none"> All southbound lanes closed between 11 p.m. and 5 a.m. 						✓	✓
DETOUR 2 <ul style="list-style-type: none"> From the southbound I-405, exit Studebaker Road (stay in the right lane) and proceed south on Studebaker Road, turn left on Westminster Avenue, then continue east on Westminster Avenue to access the SB I-405 on-ramp <ul style="list-style-type: none"> OR Continue east on Westminster Avenue and turn left on Goldenwest Street to access the EB SR-22 on-ramp From the southbound I-605 take the Spring Street exit and turn right, proceed west, turn left on Studebaker Road, turn left on Westminster Avenue, then continue east on Westminster Avenue to access the SB I-405 on-ramp: <ul style="list-style-type: none"> OR Continue east on Westminster Avenue and turn left on Goldenwest Street to access the EB SR-22 on-ramp 							



CLOSURE & DETOUR NOTICE

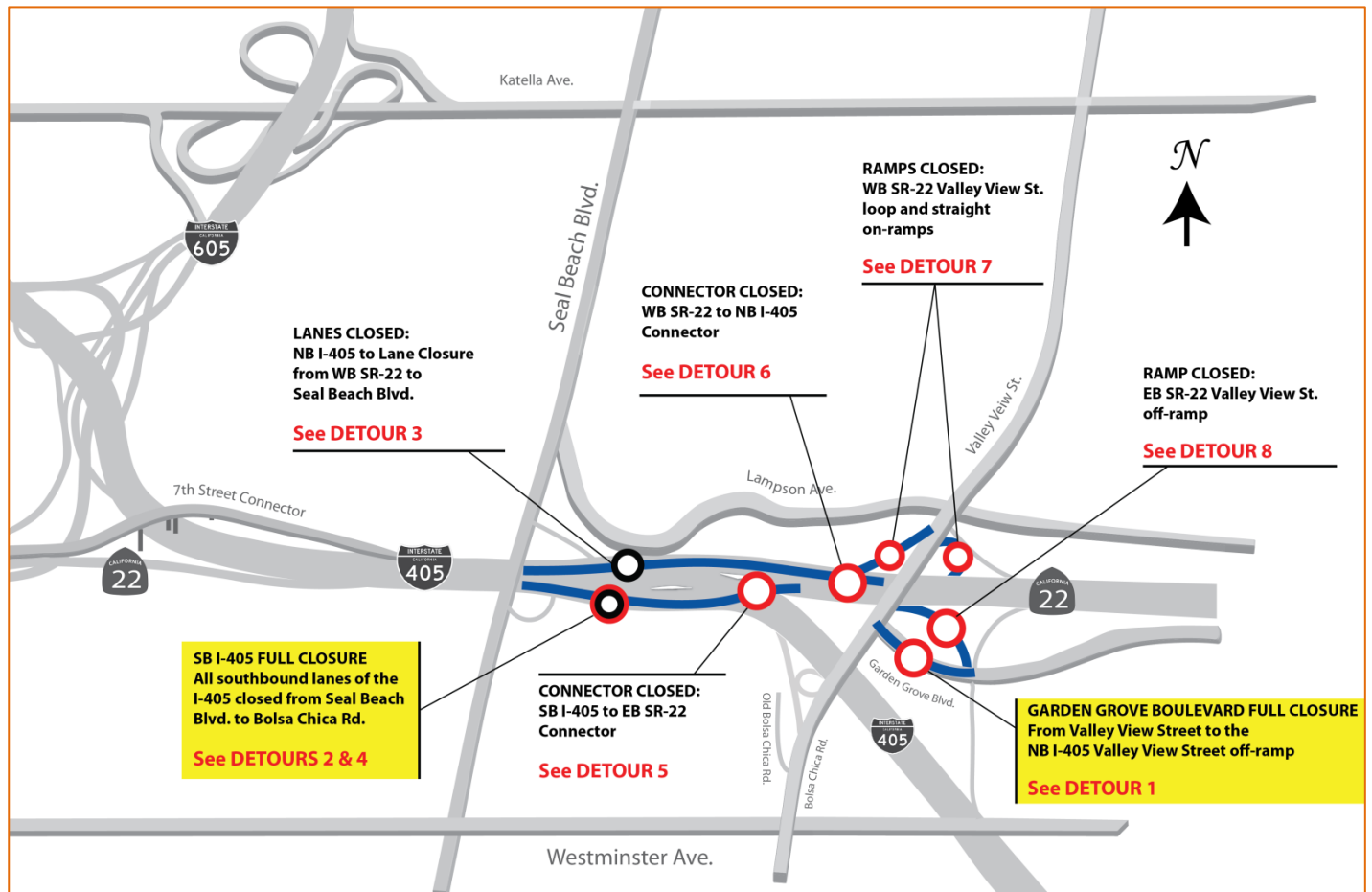
CLOSURES	Sunday 3/18/12	Monday 3/19/12	Tuesday 3/20/12	Wednesday 3/21/12	Thursday 3/22/12	Friday 3/23/12	Saturday 3/24/12
3							
NB I-405 Lane Closure from the WB SR-22 to Seal Beach Boulevard <ul style="list-style-type: none"> Lanes only, closed between 10 p.m. and 5 a.m. 				✓	✓	✓	✓
DETOUR 3 <ul style="list-style-type: none"> At least one lane of the NB I-405 freeway will remain open between Westminster Avenue and Valley View Street 							
4							
SB I-405 Lane Closure from Seal Beach Boulevard to the EB SR-22 <ul style="list-style-type: none"> Lanes only, closed between 10 p.m. and 5 a.m. 				✓	✓		
DETOUR 4 <ul style="list-style-type: none"> At least one lane of the SB I-405 freeway will remain open between Westminster Avenue and Valley View Street 							
5							
SB I-405 to EB SR-22 Connector <ul style="list-style-type: none"> Full closure from midnight to 5 a.m. 				✓	✓	✓	✓
DETOUR 5 <ul style="list-style-type: none"> From the SB I-405, exit Studebaker Road, stay in the right lane and proceed south, turn left on 2nd Street / Westminster Avenue, continue east on Westminster Avenue and turn left on Goldenwest Street to access the EB SR-22 on-ramp 							
6							
WB SR-22 to NB I-405 Connector <ul style="list-style-type: none"> Full closure from midnight to 5 a.m. 				✓	✓	✓	✓
DETOUR 6 <ul style="list-style-type: none"> Exit Goldenwest Street / Knott Avenue from the WB SR-22, left on Garden Grove Boulevard, left on Goldenwest Street, right on Westminster Avenue to access the NB I-405 on-ramp 							
7							
WB SR-22 Valley View Street loop and straight on-ramps <ul style="list-style-type: none"> Full closure from 10 p.m. to 5 a.m. 				✓	✓	✓	✓
DETOUR 7 <ul style="list-style-type: none"> From Valley View Street / Bolsa Chica Road, proceed south to Westminster Avenue and turn left, continue east on Westminster Avenue, to access the NB I-405 / WB SR-22 							



CLOSURE & DETOUR NOTICE

CLOSURES	Sunday 3/18/12	Monday 3/19/12	Tuesday 3/20/12	Wednesday 3/21/12	Thursday 3/22/12	Friday 3/23/12	Saturday 3/24/12
8							
EB SR-22 Valley View Street off-ramp				✓	✓	✓	✓
<ul style="list-style-type: none"> Full closure from 10 p.m. to 5 a.m. 							
DETOUR 8	<ul style="list-style-type: none"> From the SB I-405 exit Studebaker Road and proceed south, turn left on 2nd Street / Westminster Avenue, continue east on Westminster Avenue and turn left on Goldenwest Street to access the EB SR-22 on-ramp 						

EAST SEGMENT MAP





CLOSURE & DETOUR NOTICE

WEST SEGMENT NIGHTTIME CLOSURES

CLOSURES	Sunday 3/18/12	Monday 3/19/12	Tuesday 3/20/12	Wednesday 3/21/12	Thursday 3/22/12	Friday 3/23/12	Saturday 3/24/12
1							
Northbound I-405 / Westbound SR-22 / 7th Street Connector Closure <ul style="list-style-type: none"> Connector to reopen APRIL 2012 	✓	✓	✓	✓	✓	✓	✓
DETOUR 1 <ul style="list-style-type: none"> From the northbound I-405, exit Westminster Avenue and proceed west. Turn right on Studebaker Road and proceed north to 7th Street and SR-22 OR <ul style="list-style-type: none"> From the northbound I-405, exit Palo Verde Avenue. Turn left on Palo Verde Avenue and proceed south to Stearns Street. Turn left on Stearns Street and proceed to the southbound I-405 on-ramp. Take the southbound I-405 to the westbound SR-22 connector and 7th Street OR <ul style="list-style-type: none"> From the northbound I-405, exit Palo Verde Avenue. Turn right on Palo Verde Avenue and proceed north to Willow Street. Turn right on Willow Street and proceed east to Studebaker Road. Turn right on Studebaker Road and proceed south to 7th Street and the SR-22 							
2							
SOUTHBOUND I-405 FULL CLOSURE All southbound lanes of the I-405 from the SB I-605 to Seal Beach Boulevard <ul style="list-style-type: none"> All southbound lanes closed between 11 p.m. and 5 a.m. 						✓	✓
DETOUR 2 <ul style="list-style-type: none"> From the southbound I-405, exit Studebaker Road (stay in the right lane) and proceed south on Studebaker Road, turn left on Westminster Avenue, then continue east on Westminster Avenue to access the SB I-405 on-ramp <ul style="list-style-type: none"> OR Continue east on Westminster Avenue and turn left on Goldenwest Street to access the EB SR-22 on-ramp From the southbound I-605 take the Spring Street exit and turn right, proceed west, turn left on Studebaker Road, turn left on Westminster Avenue, then continue east on Westminster Avenue to access the SB I-405 on-ramp: <ul style="list-style-type: none"> OR Continue east on Westminster Avenue and turn left on Goldenwest Street to access the EB SR-22 on-ramp 							
3							
NB I-405 Lane Closure from Seal Beach Boulevard to the I-605 <ul style="list-style-type: none"> Lanes only, closed from 10 p.m. to 5 a.m. 			✓	✓	✓	✓	✓
DETOUR 3 <ul style="list-style-type: none"> At least one lane of the NB I-405 freeway will remain open, from Seal Beach Boulevard to the NB I-605 							



CLOSURE & DETOUR NOTICE

CLOSURES	Sunday 3/18/12	Monday 3/19/12	Tuesday 3/20/12	Wednesday 3/21/12	Thursday 3/22/12	Friday 3/23/12	Saturday 3/24/12
4							
SB I-405 Lane Closure from the I-605 to Seal Beach Boulevard <ul style="list-style-type: none"> Lanes only, closed from 10 p.m. to 5 a.m. 				✓	✓		
DETOUR 4 <ul style="list-style-type: none"> At least one lane of the SB I-405 freeway will remain open, from the SB I-605 freeway to Seal Beach Boulevard 							
5							
NB I-605 Lane Closure from the NB I-405 to Katella Avenue <ul style="list-style-type: none"> Lanes only, closed from 10 p.m. to 5 a.m. 				✓	✓	✓	✓
DETOUR 5 <ul style="list-style-type: none"> At least one lane of the NB I-605 freeway will remain open, from the NB I-405 to Katella Avenue 							
6							
SB I-605 Lane Closure from Katella Avenue to the SB I-405 <ul style="list-style-type: none"> Lanes only, closed from 11 p.m. to 5 a.m. 				✓	✓	✓	✓
DETOUR 6 <ul style="list-style-type: none"> At least one lane of the SB I-605 freeway will remain open, from Katella Avenue to the SB I-405 							
7							
NB I-405 to NB I-605 Connector <ul style="list-style-type: none"> Full closure from 11 p.m. to 5 a.m. 				✓	✓	✓	✓
DETOUR 7 <ul style="list-style-type: none"> From the NB I-405, exit Palo Verde Avenue, turn right on Palo Verde Avenue and proceed north, turn right on Willow Street and proceed east to access the NB I-605 on-ramp 							
8							
EB SR-22 to SB I-405 Connector <ul style="list-style-type: none"> Full closure from 11 p.m. to 5 a.m. 				✓	✓	✓	✓
DETOUR 8 From the EB SR-22 take the Studebaker Road exit, and turn left and proceed south on Studebaker Road, turn left onto Westminster Avenue: <ul style="list-style-type: none"> Proceed east on Westminster Avenue, turn left on Seal Beach Boulevard and continue north to access the SB I-405 on-ramp OR <ul style="list-style-type: none"> Proceed east on Westminster Avenue to access the SB I-405 on-ramp 							



CLOSURE & DETOUR NOTICE

CLOSURES	Sunday 3/18/12	Monday 3/19/12	Tuesday 3/20/12	Wednesday 3/21/12	Thursday 3/22/12	Friday 3/23/12	Saturday 3/24/12
9							
SB I-405 to NB I-605 Connector <ul style="list-style-type: none"> Full closure from 11 p.m. to 5 a.m. 				✓	✓	✓	✓
DETOUR 9 <ul style="list-style-type: none"> From the SB I-405 exit Palo Verde Avenue and turn left, proceed north on Palo Verde Avenue to East Willow Street, turn right on East Willow Street and proceed east to access the NB I-605 on-ramp 							
10							
EB SR-22 to NB I-605 / NB I-405 Connectors <ul style="list-style-type: none"> Full closure from 11 p.m. to 5 a.m. 				✓	✓	✓	✓
<ul style="list-style-type: none"> One lane of the EB SR-22 / NB I-605 Connector will reopen at 5 a.m. Saturday, March 24; one lane will remain closed until 10 a.m. 						✓	
DETOUR 10 From the EB SR-22 take the Studebaker Road exit and turn right: <ul style="list-style-type: none"> Proceed north on Studebaker Road to East Willow Street, turn right on East Willow Street and proceed east to access the NB I-605 on-ramp OR <ul style="list-style-type: none"> Proceed north on Studebaker Road to access the NB I-405 on-ramp 							
11							
NB I-405 Seal Beach Boulevard off-ramp <ul style="list-style-type: none"> Off-ramp closed from 11 p.m. to 5 a.m. 				✓	✓	✓	✓
DETOUR 11 <ul style="list-style-type: none"> From the WB SR-22 exit Valley View Street, turn right and proceed north on Valley View Street, turn left on Lampson Avenue and continue west to Seal Beach Boulevard OR <ul style="list-style-type: none"> From the NB I-405 exit Westminster Avenue, turn left on Westminster Avenue and proceed west, turn right on Seal Beach Boulevard 							



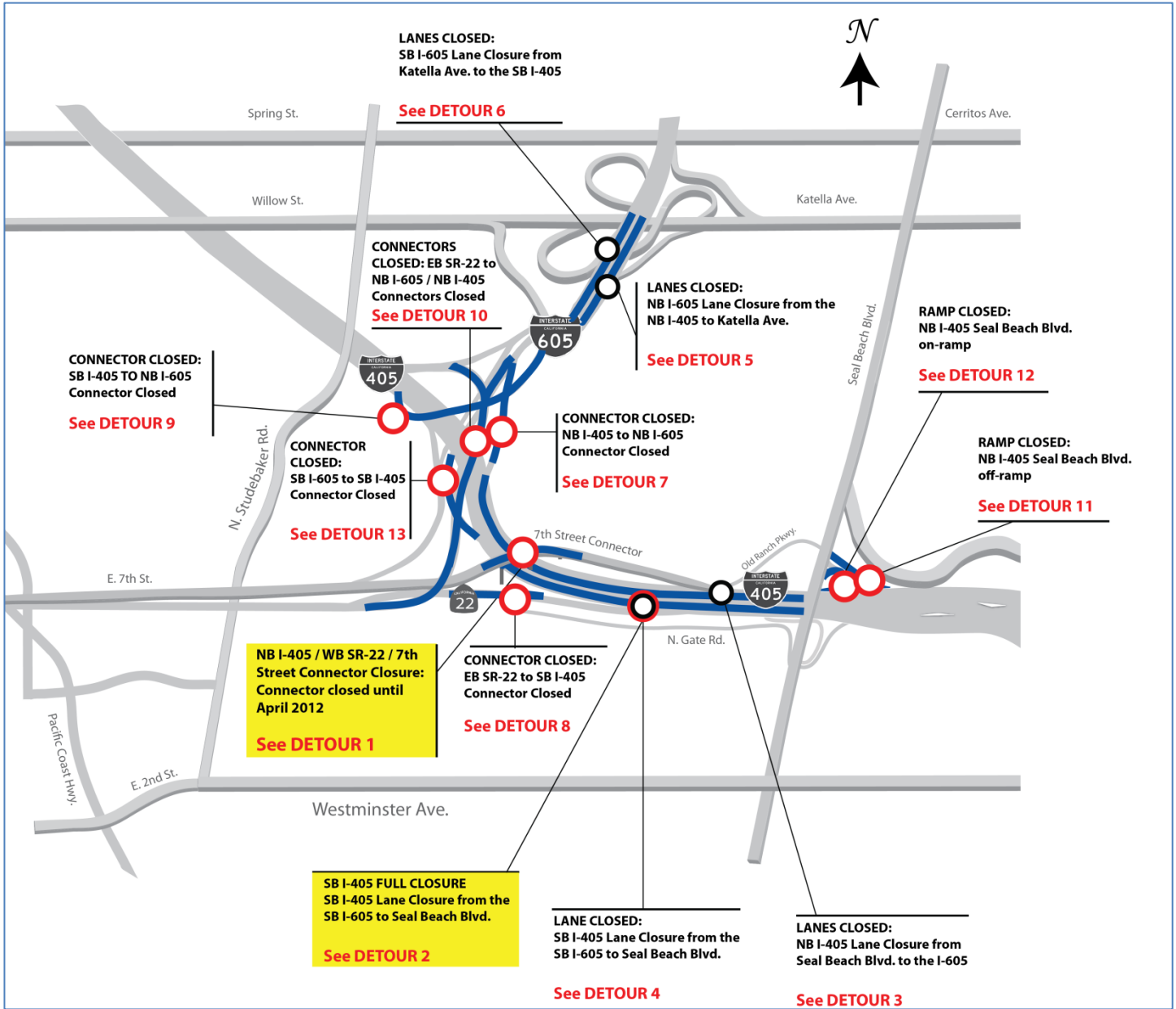
CLOSURE & DETOUR NOTICE

CLOSURES	Sunday 3/18/12	Monday 3/19/12	Tuesday 3/20/12	Wednesday 3/21/12	Thursday 3/22/12	Friday 3/23/12	Saturday 3/24/12
12							
NB I-405 Seal Beach Boulevard on-ramp <ul style="list-style-type: none"> On-ramp closed from 11 p.m. to 5 a.m. 				✓	✓	✓	✓
DETOUR 12 <ul style="list-style-type: none"> From Seal Beach Boulevard proceed south and turn right on Westminster Avenue, turn right on Studebaker Road and continue north to access the NB I-405 freeway on-ramp OR <ul style="list-style-type: none"> Proceed north on Seal Beach Boulevard / Los Alamitos Boulevard, turn left on Katella Avenue and proceed west to access the NB I-605 freeway on-ramp 							
13							
SB I-605 to SB I-405 Connector <ul style="list-style-type: none"> Connector closed from 11 p.m. to 5 a.m. 				✓	✓	✓	✓
DETOUR 13 <p>From the SB I-605 exit East Spring Street, turn right and proceed west on East Spring Street, turn left on Studebaker Road, proceed south on Studebaker Road and turn left on Westminster Avenue:</p> <ul style="list-style-type: none"> Continue east on Westminster Avenue, turn left on Seal Beach Boulevard to access the SB I-405 on-ramp OR <ul style="list-style-type: none"> Continue east on Westminster Avenue to access the SB I-405 on-ramp OR <ul style="list-style-type: none"> Continue east on Westminster Avenue and turn left on Goldenwest Street to access the EB SR-22 on-ramp 							



CLOSURE & DETOUR NOTICE

WEST SEGMENT MAP





CLOSURE & DETOUR NOTICE

**FOR MORE INFORMATION
OR TO BE ADDED TO THE
PROJECT DISTRIBUTION
LIST:**



Contact Christina Byrne,
Community Liaison, at
(714) 560-5717 or
cbyrne@octa.net



[www.facebook.com/
WCCProjectInfo](http://www.facebook.com/WCCProjectInfo)



@wccprojectinfo



www.octa.net/westcounty



Construction Helpline
(800) 724-0353

Orange County Transportation Authority

550 S. Main St.
P.O. Box 14184
Orange, CA 92863-1584

OCTA and Caltrans remind motorists to please drive with extra caution and reduce speeds while traveling through freeway work zones. Individuals with sensory disabilities can obtain this document in an alternate format by contacting the Construction Helpline at (800) 724-0353 through the California Relay System (800) 735-2922. For any other inquiries regarding the project, please call the Construction Helpline at (800) 724-0353. Every effort will be made to minimize impacts to residents, businesses and motorists throughout this and all phases of construction.

